



# AVT Vibrating Feeder

*The AVT vibrating feeder is designed to yield a uniform inflow of all types of materials with small to medium particle.*

It is particularly suited for inflow of raw materials to crushers

## CONSTRUCTION

### VIBRATING BOX

Electro-welded steel, heavily ribbed and reinforced to confer rigidity.

### SUSPENSION

Helicoidal springs with threaded height adjustment mechanism.

### DRIVE MECHANISM

Electric vibrator motor that counterturn to confer a single/direction vibratory movement. Adjustable eccentric mass-type vibrators.

### OPTIONS

Anti-stick and anti-wear tray finish.  
Electronic speed regulators.



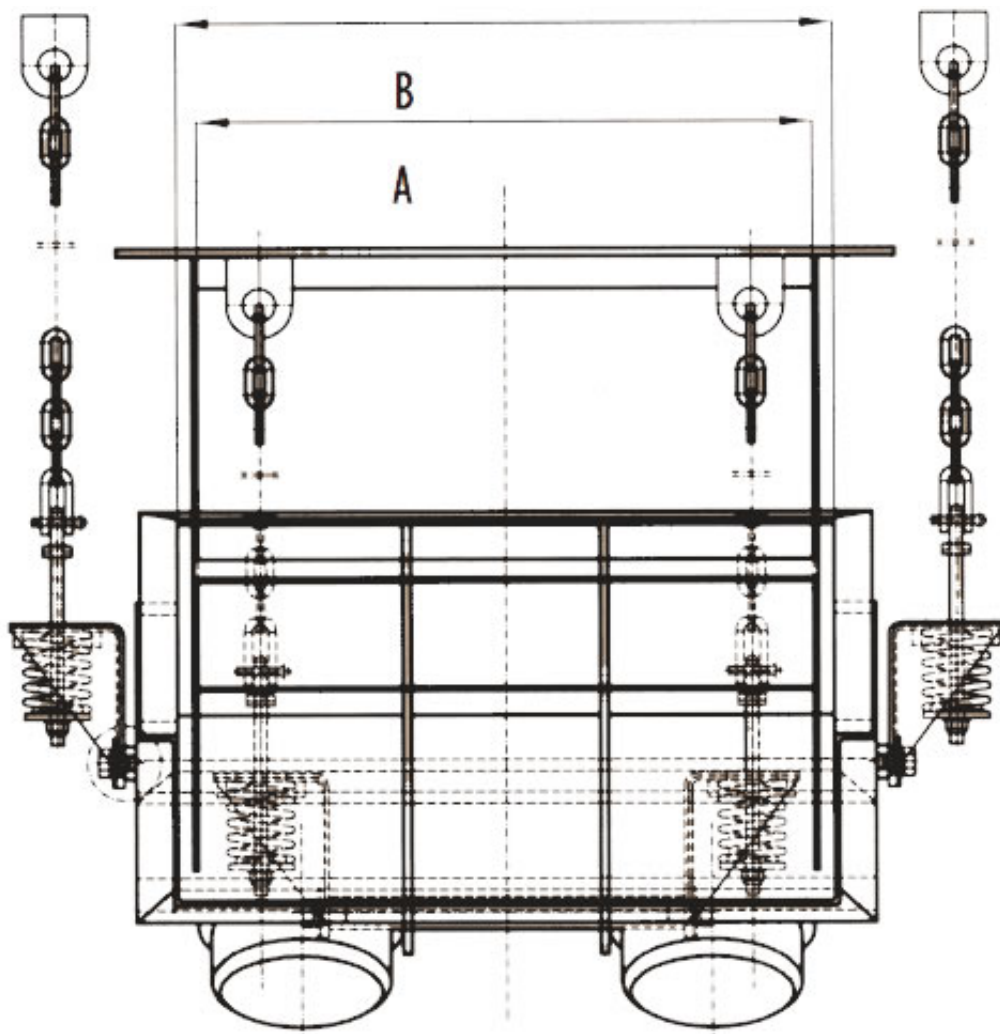
## TECHNICAL FEATURES

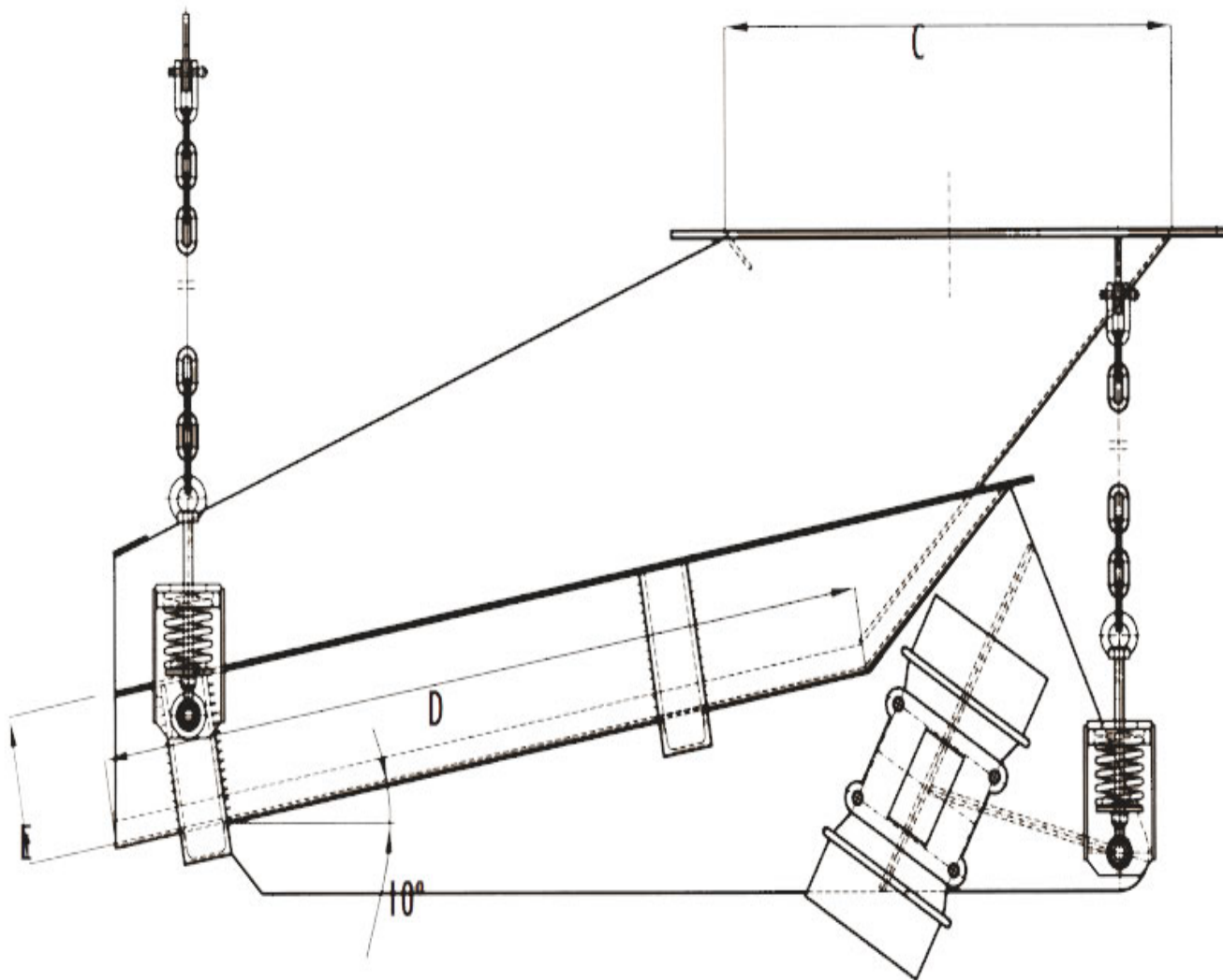
MODEL	A	B	C	D	E
AVT-80	400	450	400	640	200
AVT-120	500	550	500	800	200
AVT-160	600	650	600	1113	200
AVT-220	750	800	750	1300	200

AVT-300	950	1000	950	1400	310
AVT-500	1150	1200	1150	1700	310
AVT-800	1250	1300	1250	1900	310

<b>MODEL</b>	<b>Width mm</b>	<b>Length mm</b>	<b>Power Kw</b>	<b>Yield Tn/h</b>	<b>Centrifugal F.K.P.</b>
AVT-80	450	640	0,3×2	80	840
AVT-120	550	800	0,35×2	120	1.008
AVT-160	650	1113	0,62×2	160	1.428
AVT-220	800	1300	0,65×2	220	2.228
AVT-300	1000	1400	0,90×2	300	2.728
AVT-500	1200	1700	1,15×2	500	3.450
AVT-800	1300	1900	1,60×2	800	4.716

## PLANS





© MAQUINARIA DE CANTERAS TRIMAN, S.A.U.

Calle Yanguas y Miranda, 1 Bajo, 31002 Pamplona, Navarra (España) Tel +34 948 20 71 00 / Mail [comercial@triman.es](mailto:comercial@triman.es)